



CENTRAL SCOTLAND GREEN NETWORK CONTRIBUTION (CSGNC) UPDATE

This note provides information on the new arrangements for CSGNC that have been introduced on 12 January 2018.

The CSGNC is an additional woodland creation capital grant available to applicants who are applying to the Forestry Grant Scheme and who meet specific eligibility criteria. The CSGNC recognises the extra cost involved in establishing new woodlands within the CSGN area.

The CSGNC has proved very successful with the level of demand for woodland creation in Central Scotland increasing significantly since 2015. We are now seeing the highest levels of activity since 1999. In recognition, we have increased the CSGNC budget to £3m per year and are introducing some new arrangements in order to manage and meet this increasing demand.

CSGNC Grant Rates and Area Limits

A new **Outer Core Area** has been introduced at a rate of £1500 per hectare. This rate is available up to a limit of 65 hectares per application. Both the existing Core (£2500/ha) and Fringe (£750/ha) rates, as well as the CSGNC limit of 40 hectares for these rates remains the same although the map areas have been modified (see CSGNC Areas paragraph below).

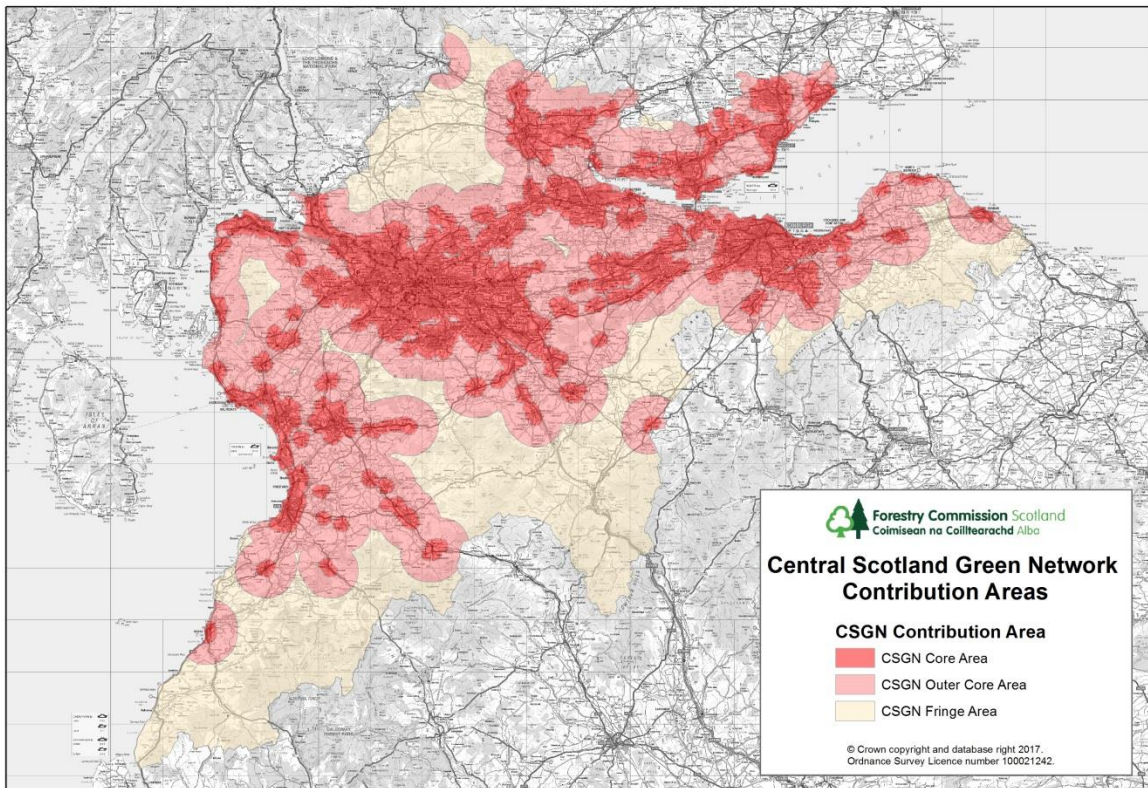
Table 1 provides a summary of the rates and area limits information.

Table 1	CSGNC Rate / ha	Max area of CSGNC per application
CSGN CORE AREA	£2500	40 ha
CSGN OUTER CORE AREA	£1500	65 ha
CSGN FRINGE AREA	£750	40 ha

CSGNC Areas

The CSGNC areas have been modified. The Core Area now extends 1KM from populations of 2000 people or more, to continue to offer the most incentive to applications closest to where people are. The new Outer Core Area extends a further 4KM and the Fringe area completes the CSGN boundary. The updated CSGNC eligibility map (shown below) now displays the new Outer Core Area as well as modifications to the Core and Fringe Areas.

CSGNC Eligibility Map



Applications Submitted before 12 January 2018

Forestry Grant Scheme (FGS) applications containing the CSGNC submitted before the 12th January 2018 will be processed with the original rates and CSGNC map areas and within an increased CSGNC budget limit of £3m/year.

Applications from 12 January 2018

The new rates and map areas will apply to all applications submitted on or after 12 January 2018.

A Rural Payment and Services release, due April 2018, will introduce the new Outer Core Area capital rate of £1500/ha. In the interim, applicants should work up new applications to 'draft' stage only until the new rate becomes available in the IT, when you can then 'submit' your application.

Whilst, it will not be possible to approve applications containing the new Outer Core Area rate until the new rate functionality becomes available we will continue work with you to process your application as far as possible.



FGS Web Page and FCS Map Viewer Updates

The [FGS web pages](#) and the [FCS Map Viewer](#) will be updated shortly to reflect the new eligibility requirements.

Further Information

Please contact your local Conservancy office for more information.

Brendan Callaghan
Head of Delivery and Regions
Forestry Commission Scotland
National Office
Edinburgh